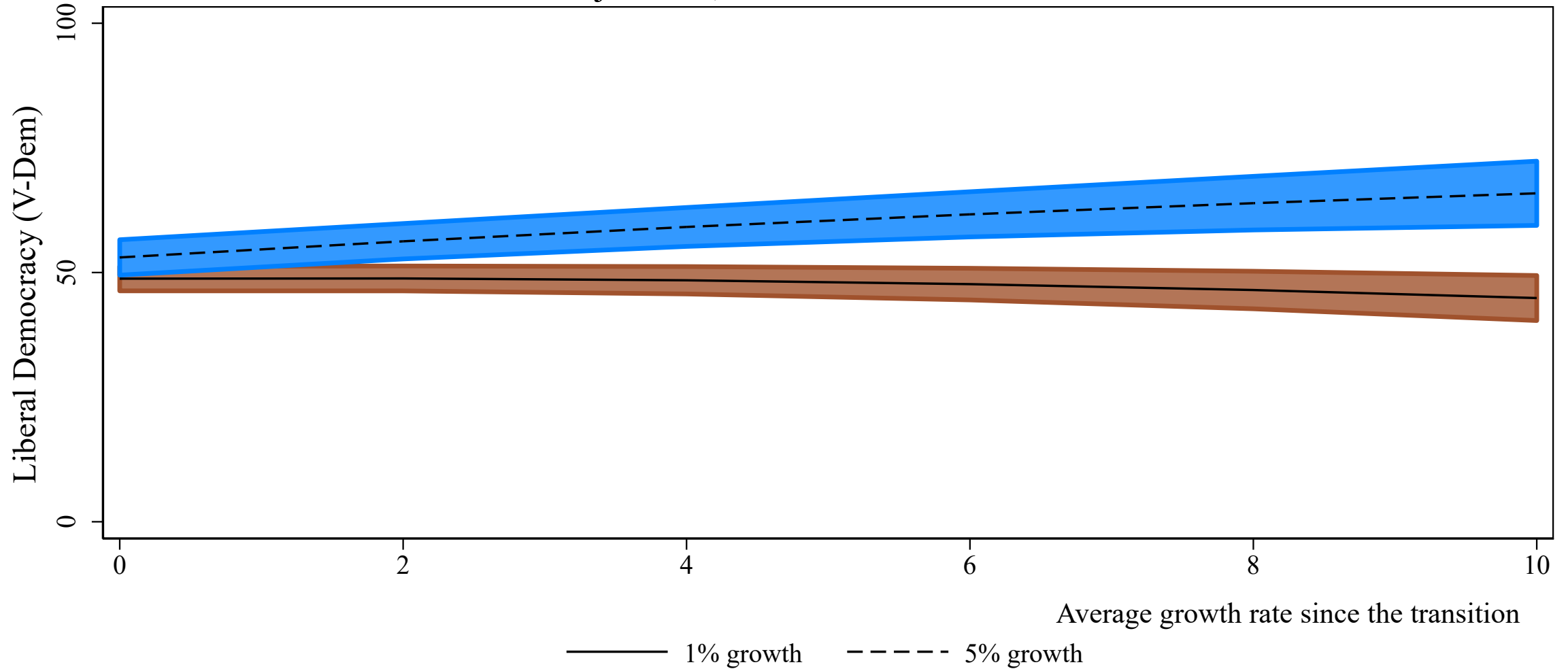


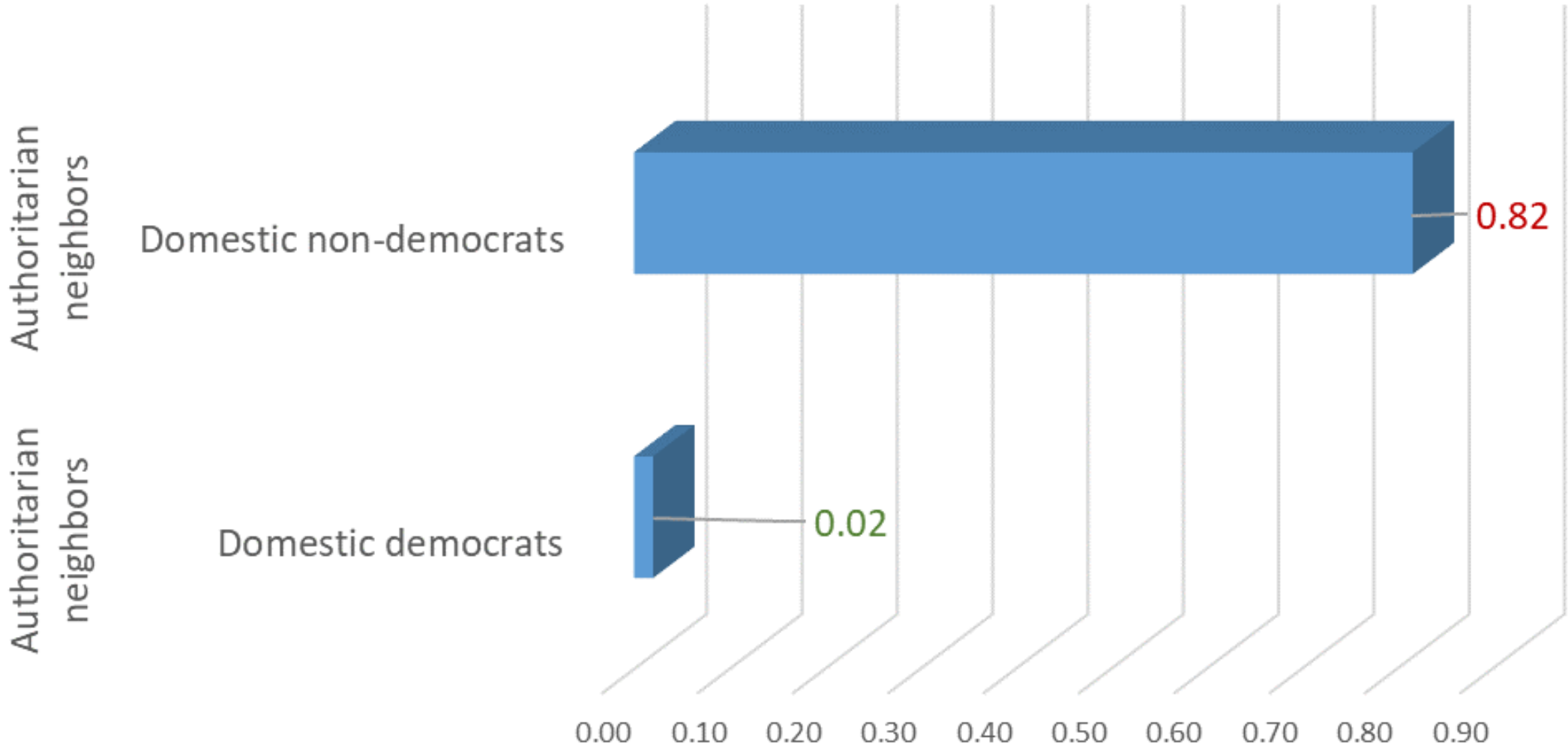
Predicted Democratic Trajectories, at Two Historical Levels of Economic Growth



Analysis of trajectories for 98 democratic regimes worldwide, from 1974 to 2017 (n = 1595).

Estimator is a latent growth-curve model with trajectory dependent on average historical levels of growth and other covariates.

Predicted risk of democratic breakdown



Based on Mainwaring and Perez-Linan (2014, Table 4.6). Duration models for 20 Latin American countries, 1945-2005 (644 country-years of democracy). Estimates adjusted for structural, institutional, and international confounders.